



**CLASP.**

# Planning for Renewable Energy

Peter Dutton

Spatial Planning

Cheshire West and Chester Council



**CLASP.**

Delivered by:



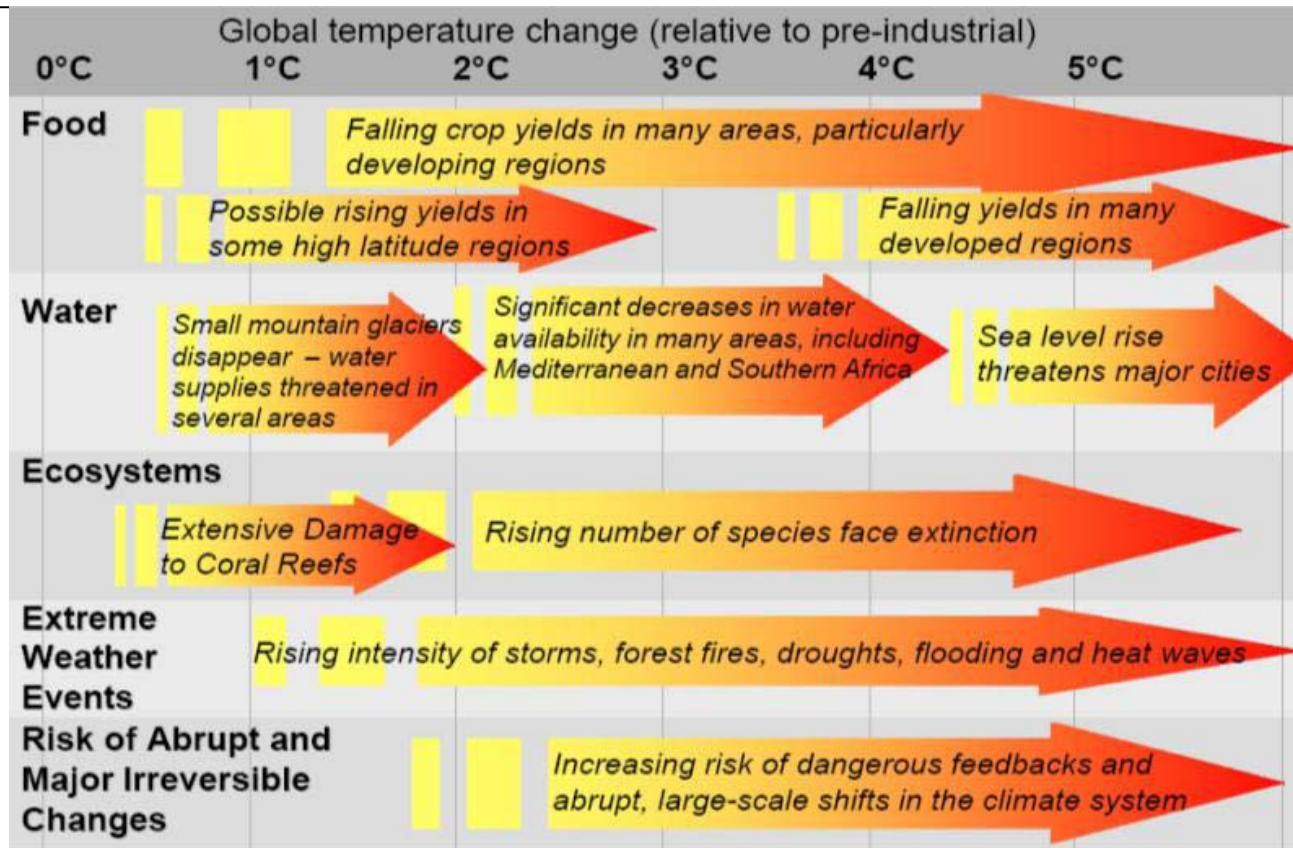
Cheshire West  
and Chester



# Presentation Outline

- Overview of the need for renewable energy
- The planning policy framework
- Current and emerging local policy
- Planning for renewables in your area

# The Case for Renewable Energy



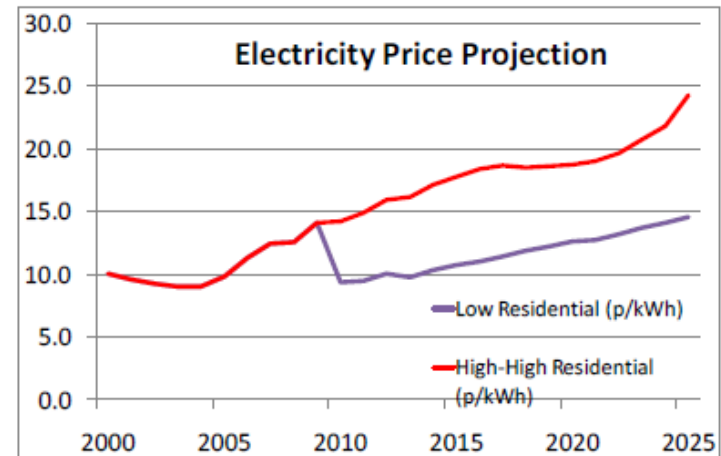
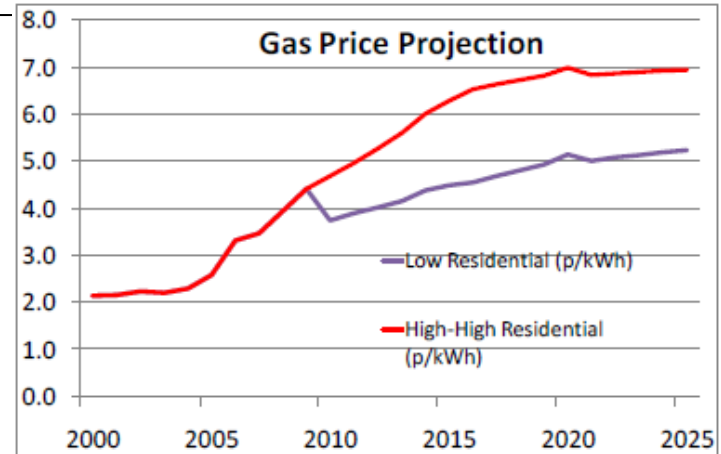
# The Case for Renewable Energy

## Energy Security

- Increasing fuel prices
- Increasing electricity demand
- Declining fuel stocks and plant closures
- Mix of supply

## Economic benefits

Remember...efficiency first



# The Case for Renewable Energy

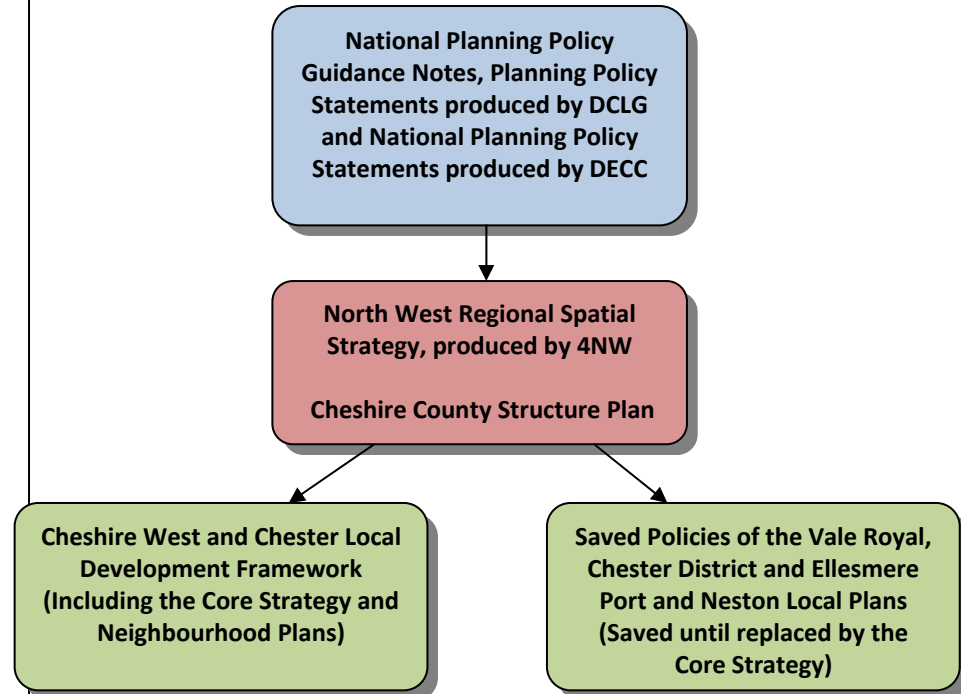
## Policy commitments

- Global
  - Kyoto Protocol – Legally binding 2005
- European targets
  - 20% reduction in GHG emissions by 2020
  - 80-95% reduction by 2050
  - 15% from renewables by 2020
- UK – Climate Change Act 2008
  - 2010: 20% reduction in GHG emissions
  - 2020: 34% reduction
  - 2050: 80% reduction
- Building Regulations



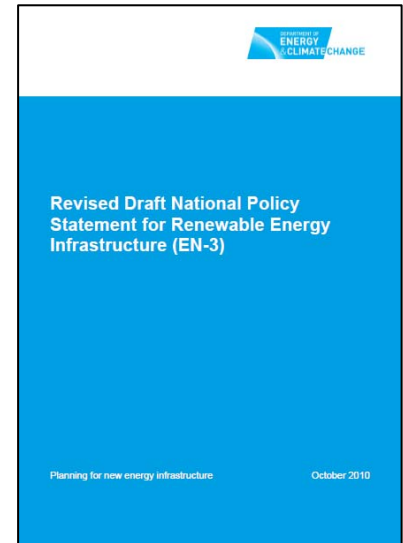
# The Planning Policy Framework

- Government Planning Policy and Guidance
- Regional Spatial Strategies (Now revoked)
- Local Development Frameworks (Including the Core Strategy)
- The introduction of the Localism agenda



# National Planning Policy

- Planning Policy Statement 22
  - *Planning documents should promote rather than restrict the development of renewable energy sources.*
  - *Local authorities can require a percentage of the energy to be used in new developments to come from renewable sources*
- Planning and Climate Change Supplement
- National Policy Statements



# Current Local Planning Policy

## Former Vale Royal area

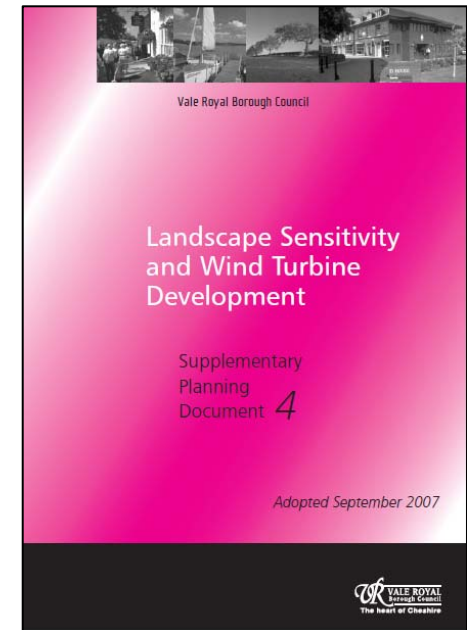
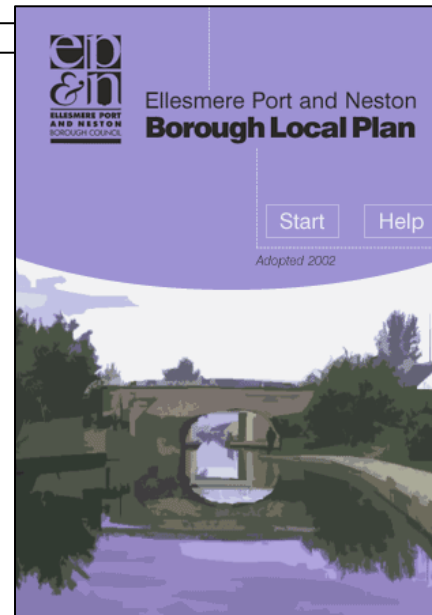
- Local Plan policy BE21 – Renewable Energy
- SPD4 Landscape and Wind Turbines
- SPD3 – Developer Contributions

## Former Chester District area

- Local Plan policy ENV 56 – Renewable Energy
- Sustainable Development SPD

## Former Ellesmere Port area

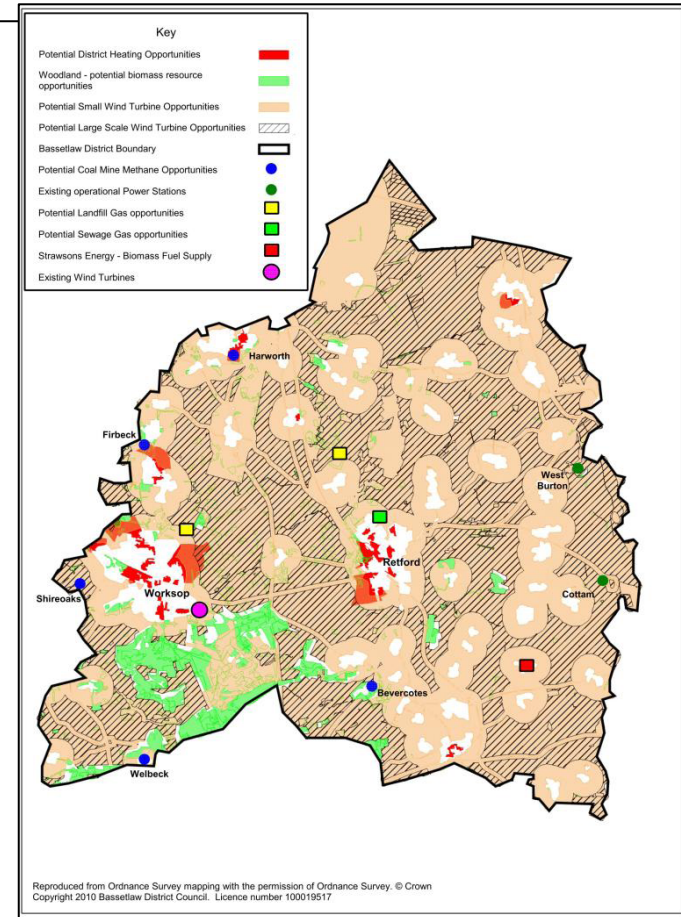
- Local Plan policy GEN11 – Renewable Energy





# LDF and Core Strategy

- Core Strategy renewable and low carbon energy policy
- Criteria based policy, decentralised energy policy and district heating requirement
- Supported by 'energy opportunities map'
- Supported by completed and ongoing evidence work





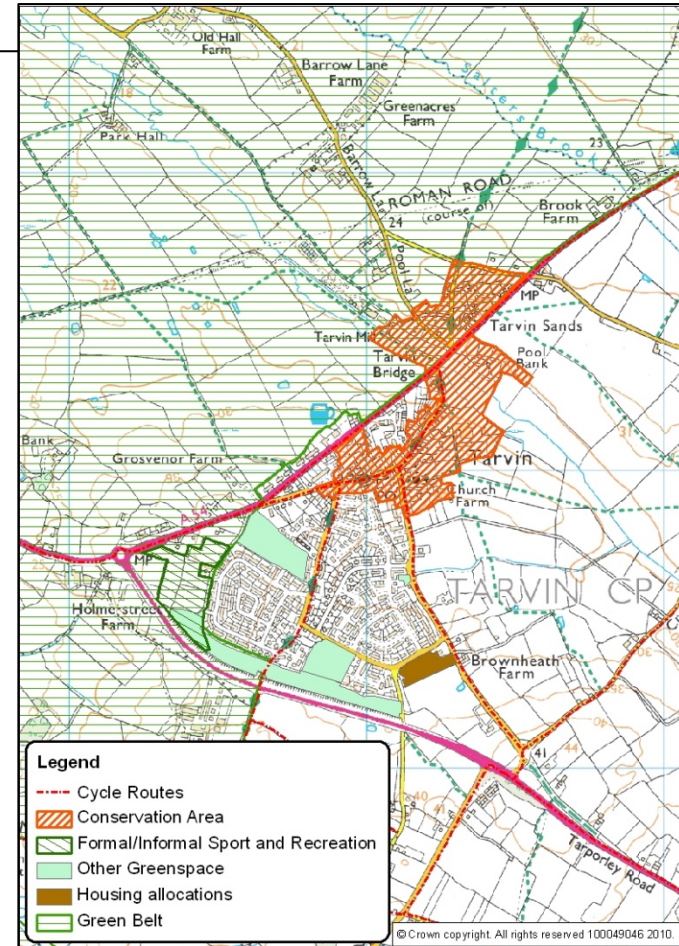
# Your involvement in Applications

- Consulted on larger scale applications within or in the vicinity of your parish area
- Consulted on small scale applications in your area
- You can make representations on applications
- You can appear at committees and appeals

# When permission is Required...

Considerations to be taken into account in determining an application may include:

- Visual impact
- Landscape impacts
- Environmental impacts
- Noise
- Shadow flicker
- Green Belt



# Permitted Development Rights

- Permitted development rights amended in 2008 to permit the installation of some specified domestic micro generation equipment, including solar pv and thermal, heat pumps and flues for biomass and CHP systems
- Wind turbines not yet included and non-domestic sites being considered.



# Local Initiatives and Benefits

- Community ownership
- Retaining business rates
- Discounted electricity
- Community funds
- Recreational opportunities and more





# Steps to an application

- Consider energy efficiency first
- Check feasibility
- Get advice from an energy specialist
- Speak to the Council and stakeholders
- Gather supporting information
- Submit an application

# Further Information

- Spatial Planning (Planning policy)
  - Peter Dutton 01244 973659
  - [Peter.dutton@cheshirewestandchester.gov.uk](mailto:Peter.dutton@cheshirewestandchester.gov.uk)
- Development Management (Control)
  - 0300 123 7027
  - [planning@cheshirewestandchester.gov.uk](mailto:planning@cheshirewestandchester.gov.uk)